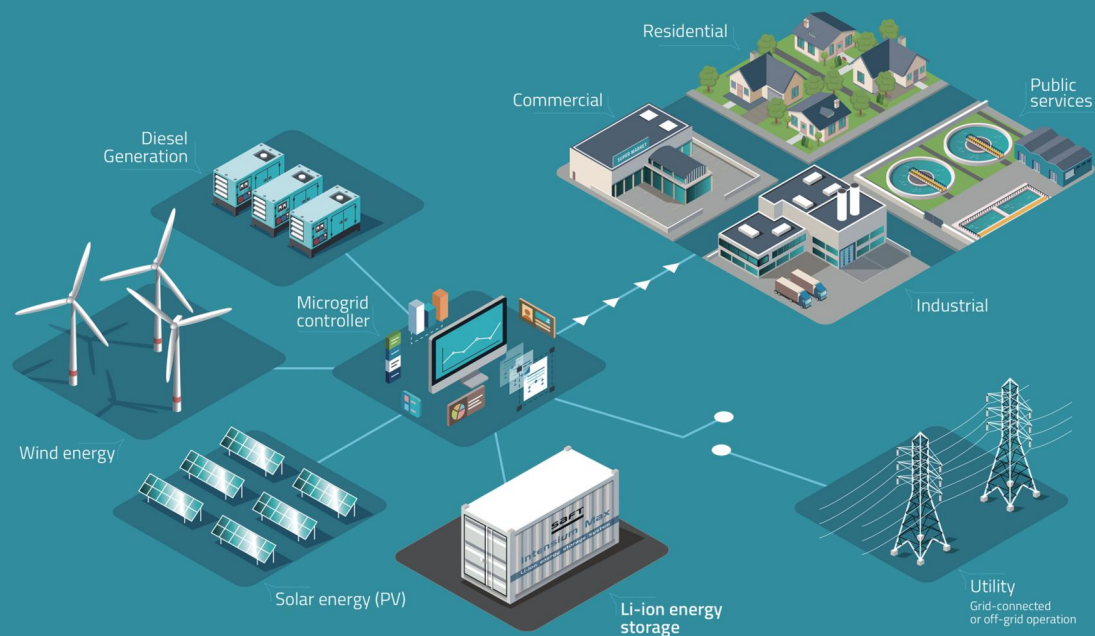




# PKNERGY PRODUCT CATALOGUE



**PKNERGY**

SHENZHEN PKNERGY ENERGY CO.,LTD

Tel: 86-755-86670646

Fax: 86-755-86670609

Website: [www.pknergy.com](http://www.pknergy.com)/[www.pknergypower.com](http://www.pknergypower.com)

E-mail: [sales@pknergy.com](mailto:sales@pknergy.com)/[sales@pknergypower.com](mailto:sales@pknergypower.com)

Address: 902, Tower B, Hongrongyuan North Station Center,  
North Station Community, Minzhi Street, Longhua District,  
Shenzhen, China



## Company Profile ▼

Shenzhen Pknergy Energy Co., Ltd is a new energy company established in 1998, mainly engaged in lithium batteries, lithium iron phosphate(LiFePO4) batteries, and lithium lead-acid batteries, li-polymer batteries. PKnergy specializes in R&D, production, sales of energy storage solutions, and renewable energy solutions. Focus on becoming a high-tech enterprise of green energy and a battery solution provider for customized applications.

Since its establishment, Pknergy has been committed to serving communication, IT, home applications, finance, security, transportation, high-end consumer electronics, medical equipment, power tools and other industries involving batteries and power. After years of development, Pknergy has become one of the top lithium battery solution providers in the global market.

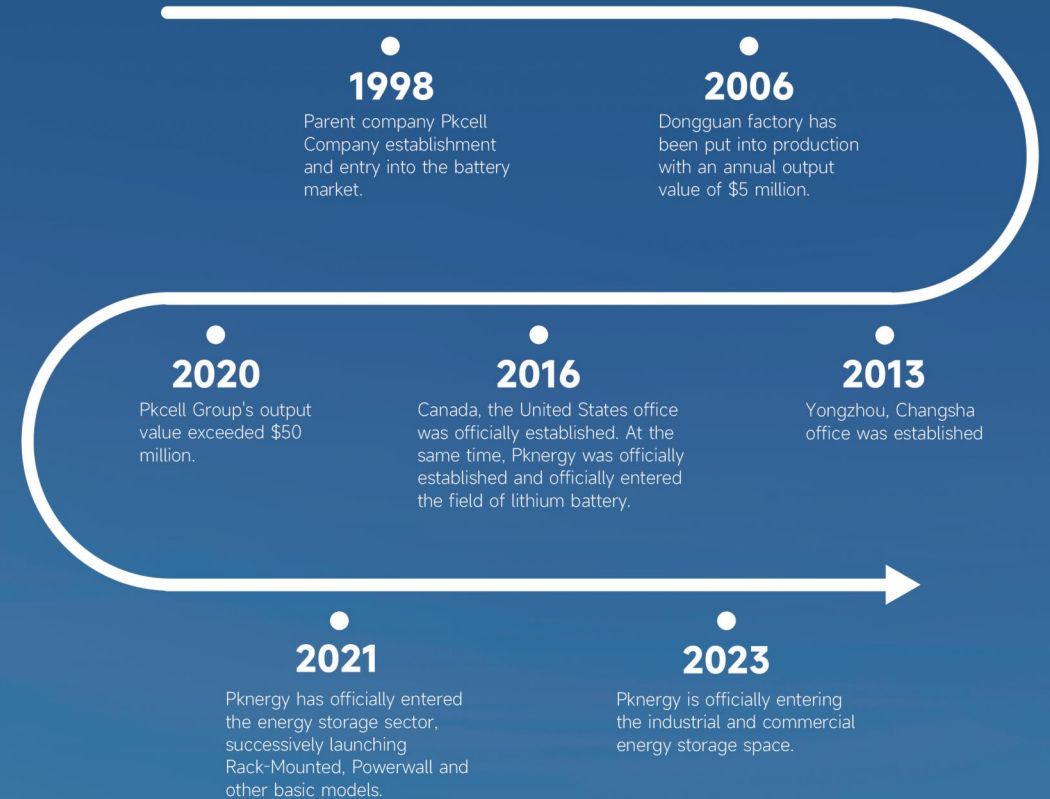
After years of development, Pknergy has become one of the top lithium battery solution providers in the global market.

At the same time, we have the most advanced ODM service, processing and production and the most powerful full supply chain system. As a participant in the global market, PKNERGY's products have passed CB, UL, CE/IEC, reach, RoHS and other international certifications. In addition, PKNERGY has also introduced ISO9001 and ISO14001 systems. Due to its rapid growth,

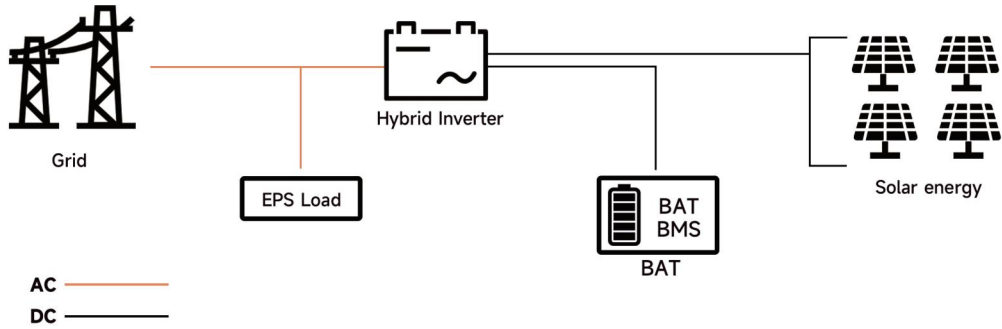
PKNERGY has introduced the best equipment, the most advanced technology and management system. The innovative attitude always brings customers the best product and service experience.

PKNERGY has established lots of logistics warehousing bases to efficiently serve customers in North America Canada, USA, etc.

# Company History

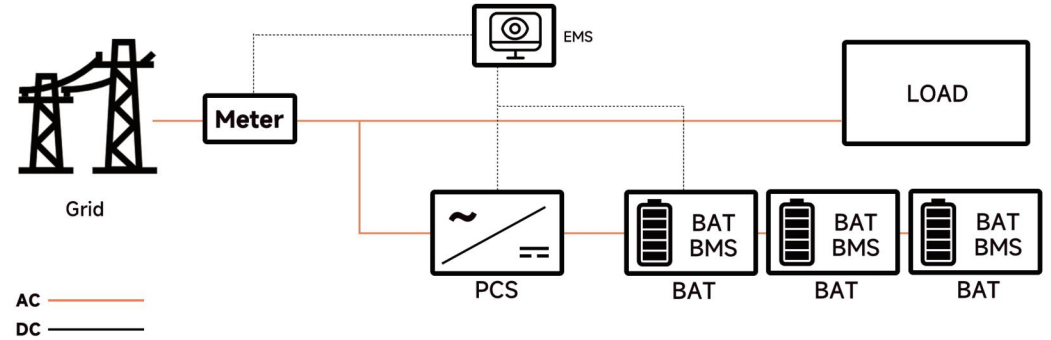


**Home Electricity Solutions**

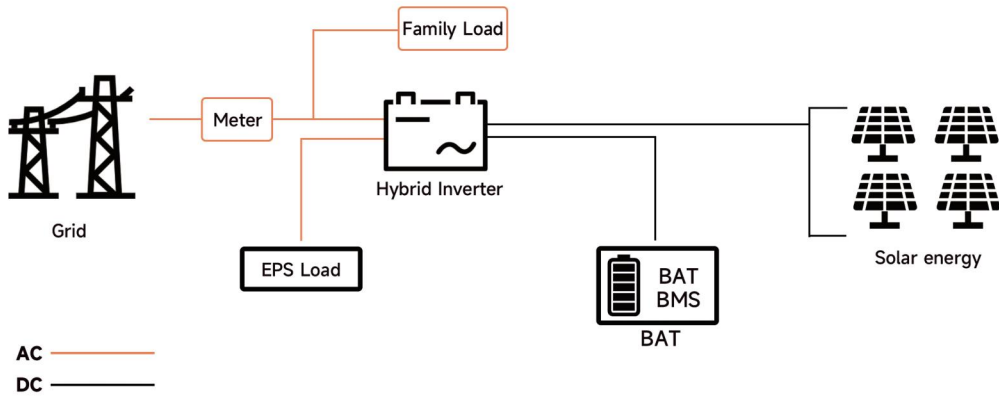


**OFF-Grid energy storage system**

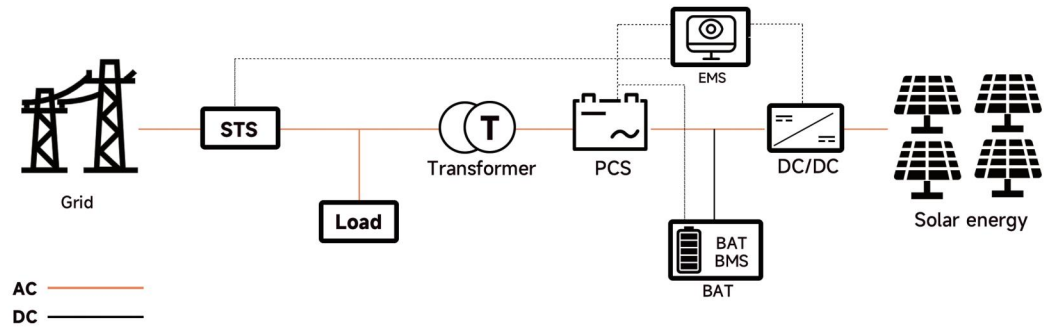
**Industrial Power Solutions**



**ON-Grid energy storage system**



**On/OFF-Grid energy storage system**



**ON/OFF-Grid energy storage system**



**Application scenarios**



No Electricity Areas



Industrial Project



Family



Building



Communication Station



Islands



Ship

**PKENERGY Full Range Of Products**



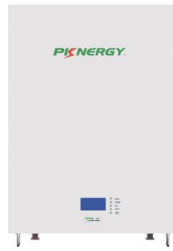


# LiFePO4 Battery Series

## Power wall Battery Series



- PK-512280P-M



- PK-48200P-E
- PK-512200P-E



- Pk-48100P-N
- Pk-512100P-N
- Pk-24200P-N

## Rack-mounted Battery Seires



- PK-48100R/PK-512100R
- PK-48200R/PK-512200R

## LiFePo4 Battery Pack



- Pk-1250-LFP
- Pk-12100-LFP
- Pk-12150-LFP
- Pk-12200-LFP
- Pk-24100-LFP
- PK-24200-LFP



- PK-HMT-11KW

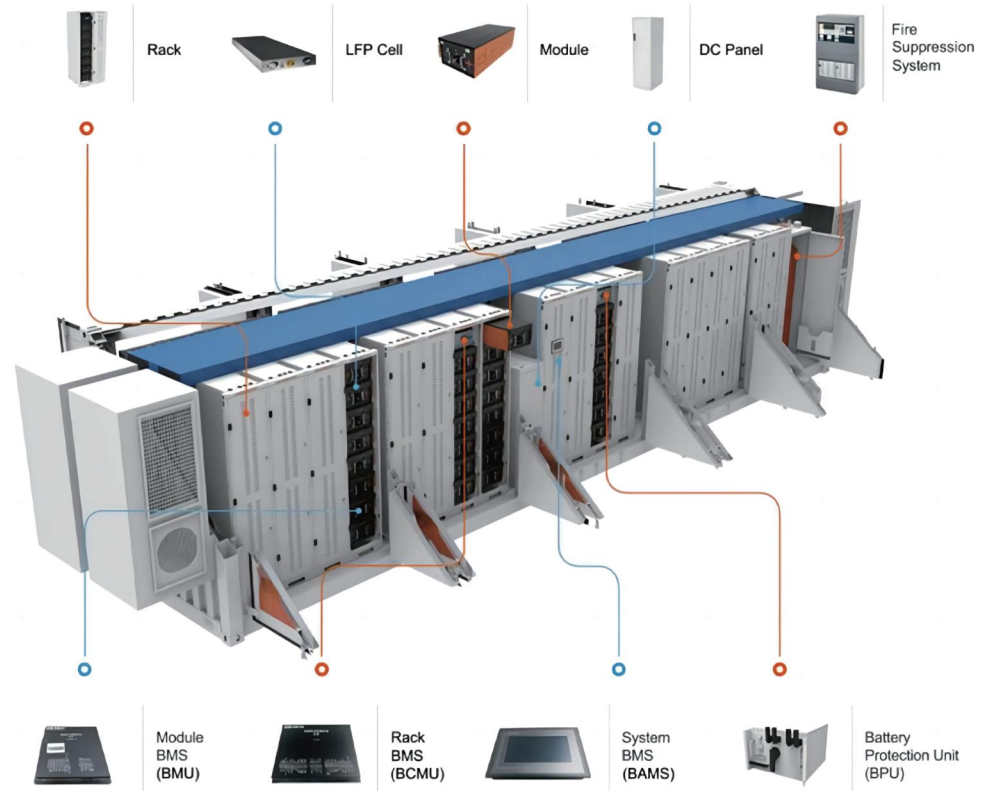
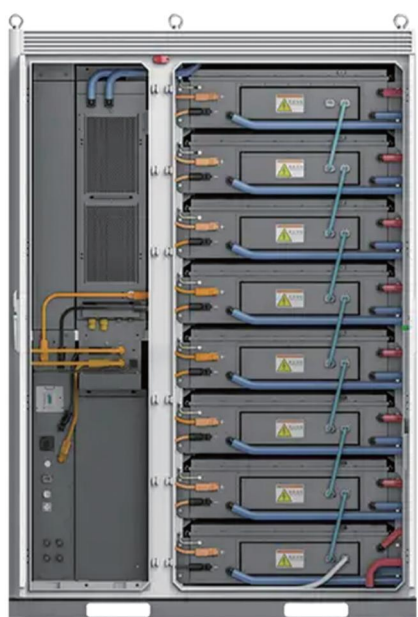


- PK-48200P-S
- PK-512200P-S



- PK-HES-6KW

# BESS Series



# PK-512280P-M Series 15Kwh Powerwall Battery

HOME ENERGY STORAGE PRODUCT WHICH ADOPTS HIGH SAFETY LFP TECHNOLOGY. 15KWH CAPACITY. UNIVERSAL WHEELS&REMOTE UPDATE & EASY MONITORING



LFP technology plus smart BMS protection



Compact size and inset terminals safe protection design



Over 7000 cycles @90% DoD

**15**  
Years

15 Years service life 95% discharge efficiency

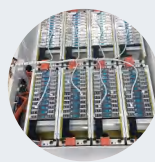


Metal case with custom color support (Upgradable to waterproof case)

## Multi-Purpose Battery Solution



**Small Size And High Capacity**  
Using 3.2V 280Ah high-capacity cell, small size design saves space.



**Internal Structure Upgrade**  
Small size-Upgraded with a 25% reduction in volume for a sleeker appearance.



**Double Protection Against Leakage**

The control panel is equipped with air switch for double protection to ensure safety.



**APP Remotely Monitors Battery Status**

Built-in WIFI signal. Download the APP through the QR code to remotely monitor, control and set up the battery.



**Universal Wheels Design**

The bottom is equipped with universal wheels for easy movement and installation.

## Technical Specifications(BAT)

Model	PK-512280P-M
Nominal Voltage	51.2v
Cell model/Configuration	3.2V280Ah(EVE)/16S1P(51.2)
Capacity	280AH
Rated Energy	14.336KVH
Usable Energy	12.9KWH
Max.Charge/Discharge Current	150A/150A
Voltage Range	48—56.5V
Scalability	Up to 10 parallel
Communication	RS232-PC, TYPE-C, RS485-Inverter, Canbus-Inverter
cycle Life	≥7000cycles@25°C, 90%DOD,60%ECL
Design Life	≥15 Years
MECHANICAL SPECIFICATIONS	
Weight	Approx : 115kg
Dimension	780*240*500mm
Installation Mode	Round Installation
IP Grade	IP21
SECURITY AND CERTIFICATION	
Safety (Pack)	CE-EMC,UN38. 3,MSDS
Safety (Cell)	UN38.3,NSDS
Protection	BMS, Breaker
ENVIRONMENTAL SPECIFICATIONS	
Operating Temperature	Charge:-10°C~50°C;Discharge:-20°C~50°C
Altitude (m)	≤2000
Humidity	≤95%



# PK-512100P-N Series 5KWH PowerWall battery

HOME ENERGY STORAGE PRODUCT WHICH ADOPTS HIGH SAFETY LFP TECHNOLOGY. 5KWH CAPACITY. PARALLEL CONNECTION & REMOTE UPDATE & EASY MONITORING



LFP technology plus smart BMS protection



Compact size and inset terminals safe protection design



Over 7000 cycles @90% DoD

## 15 Years

15 Years service life  
95% discharge efficiency



Metal case with custom color support (Upgradable to waterproof case)

### Multi-Purpose Battery Solution



#### Double Protection Against Leakage

The control panel is equipped with an air switch with insulating nut for double protection to improve safety



#### Upgraded External To Prevent Touch

Positive & negative poles protected. After wiring, tighten the screws to prevent touching.



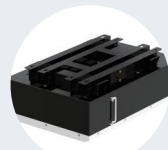
#### Small Size Reduce Volume Occupied

Upgraded with a 25% reduction in volume for a sleeker appearance.



#### APP Remotely Monitors Battery Status

Built-in WIFI signal. Download the APP through the QR code to remotely monitor, control and set up the battery.



#### Side Handles & Back Hanger To Easy Installation

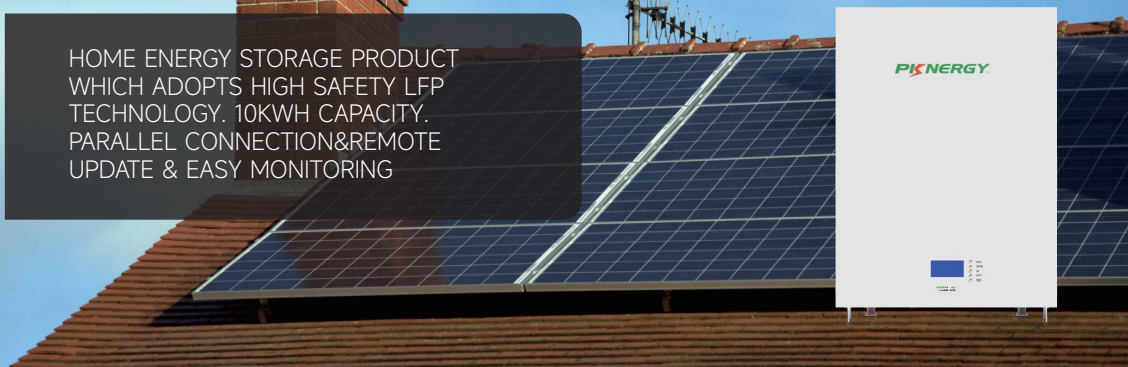
The back hanger adopts an inverted triangle design, easy to install with a load of over 300Kg.

## Technical Specifications(BAT)

Model	PK-24200P-N/PK-48100P-N	PK-512100P-N
Nominal Voltage	25.6V(8series)/48V(15series)	51.2V(16series)
Cell model/Configuration	3.2V100Ah/8S2P(25.6V) 3.2V100Ah/15S1P(48V)	3.2V(100Ah)/16S1P(51.2V)
Capacity	200AH/100AH	100AH
Rated Energy	5.12KWH/4.8KWH	5.12KWH
Usable Energy	4.6-4.8KWH	
Max. Charge/Discharge Current	100-200A(Optional)	100-200A(Optional)
Voltage Range	23-28.5V/43-53V	48-56.5V
Scalability	Up to 16 parallel	
Communication	RS232-PC,TYPE-C(PC),RS485-Inverter,Canbus-Inverter	
Cycle Life	≥7000cycles@25°C,90% DOD,60%EOL	
Design Life	≥15Years	
<b>MECHANICAL SPECIFICATIONS</b>		
Weight	Approx:48kg	Approx:49kg
Dimension	580*390*185 mm	
Installation Mode	Wall Hanging	
IP Grade	IP21/IP65[Optional]	
<b>MECHANICAL SPECIFICATIONS</b>		
Safety (Pack)	CE-EMC,UN38.3,MSDS	
Safety (Cell)	UN38.3,MSDS,IEC62619,CE,UL1973,UL2054	
Protection	BMS. Breaker	
<b>ENVIRONMENTAL SPECIFICATIONS</b>		
Operating Temperature	Charge:-10°C~50°C;Discharge:-20°C~50°C	
Altitude (m)	≤2000	
Humidity	≤95%	

# PK-512200P-E Series 10KWH PowerWall battery

HOME ENERGY STORAGE PRODUCT WHICH ADOPTS HIGH SAFETY LFP TECHNOLOGY. 10KWH CAPACITY. PARALLEL CONNECTION&REMOTE UPDATE & EASY MONITORING



LFP technology plus smart BMS protection



Compact size and inset terminals safe protection design



Over 7000 cycles @90% DoD

**15**  
Years

15 Years service life  
95% discharge efficiency



Metal case with custom color support

## Multi-Purpose Battery Solution



### Double Protection Against Leakage

The control panel is equipped with an air switch with insulating nut for double protection to improve safety



### Upgraded External To Prevent Touch

Positive & negative poles protected. After wiring, tighten the screws to prevent touching.



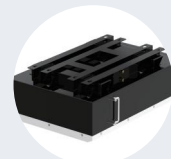
### Small Size Reduce Volume Occupied

Upgraded with a 25% reduction in volume for a sleeker appearance.



### APP Remotely Monitors Battery Status

Built-in WIFI signal. Download the APP through the QR code to remotely monitor, control and set up the battery.



### Side Handles & Back Hanger To Easy Installation

The back hanger adopts an inverted triangle design, easy to install with a load of over 300kg.

## Technical Specifications(BAT)

Model	PK-48200P-E	PK-512200P-E
Nominal Voltage	48V	51.2V
Cell model/Configuration	3.2V100Ah 15S2P	3.2V100Ah 16S2P
Capacity	200AH	
Rated Energy	9.6KWH	10.24KWH
Usable Energy	8.64KWH	9.2KWH
Max. Charge/Discharge Current(A)	100-200A(Optional)	100-200A(Optional)
Voltage Range	43-53V	48-56.5V
Scalability	Up to 16 parallel	
Communication	RS232-PC,RS485(B)-BAT,RS485(A)-Inverter,Canbus-Inverter	
Cycle Life	≥7000cycles@25°C,90% DOD,60%EOL	
Design Life	≥15Years	
<b>MECHANICAL SPECIFICATIONS</b>		
Weight	92kg	96kg
Dimension	485*690*186mm	
Installation Mode	Wall Hanging	
IP Grade	IP21	
<b>MECHANICAL SPECIFICATIONS</b>		
Safety (Pack)	IEC62619, UL1973,CE-EMC,UN38.3,MSDS	
Safety (Cell)	UN38.3,MSDS,IEC62619,CE,UL1973,UL2054	
Protection	BMS. Breaker	
<b>ENVIRONMENTAL SPECIFICATIONS</b>		
Operating Temperature(°C)	Charge:-10°C~50°C;Discharge:-20°C~50°C	
Altitude (m)	≤2000	
Humidity	≤95%	

## PK-512200P-S Series Waterproof Powerwall Battery

PK512200P-S IS LOW-VOLTAGE ENERGY STORAGE PRODUCT WHICH ADOPTS HIGH SAFETY LFP TECHNOLOGY. THE CAPACITY IS 10KWH EACH WITH IP65 PROTECTION GRADE AND CAN SUPPORT THE OUTDOOR INSTALLATION. BESIDES, IT ALSO SUPPORTS REMOTE UPDATE & EASY MONITORING.



LFP technology plus smart BMS protection



Compact size and inset terminals safe protection design



Over 7000 cycles @90% DoD

**15**  
Years

15 Years service life  
95% discharge efficiency



Metal case with custom color support

## FEATURES AND ADVANTAGES



**DIP-free design & Automatically recognized**  
The DIP switch is improved and adopts a DIP-free design. You do not need to perform dialing operations when using it alone or in parallel, and the address is automatically recognized.



**Maintenance Window easy to replace fuse**  
There is a built-in fuse in the maintenance window. If there is a short circuit occurs, the fuse can be replaced directly at the window without dismantling the machine for maintenance.



**Protection level upgrade to IP65**

From the waterproof rubber cap on the casing to the waterproof interface on the bottom of the battery, the cells and internal structure are fully protected.



**Advanced technology and design, Fashionable appearance**

The internal structure design are using the most advanced technology and manufacturing processes. The overall battery appearance is fashionable and practical.



**APP remotely monitors battery status**

Built-in WiFi signal. We will provide a QR code to download the battery remote control APP to help you monitor and set up the battery.

## Technical Specifications(BAT)

Model	PK-48200P-S	PK-512200P-S
Nominal Voltage	48V	51.2V
Cell model/Configuration	3.2V100Ah/15S2P	3.2V100Ah/16S2P
Capacity(Ah)	200AH	
Rated Energy(KWH)	9.6KWH	10.24KWH
Usable Energy(KWH)	8.64KWH	9.2KWH
Max. Charge/Discharge Current(A)	100-200A(Optional)	100-200A(Optional)
Voltage Range(Vdc)	43-53V	48-56.5V
Scalability	Up to 16 parallel	
Communication	RS232-PC,RS485(B)-BAT RS485(A)-Inverter,Canbus-Inverter	
Cycle Life	≥7000cycles@25°C,90% DOD,60%EOL	
Design Life	≥15Years (25°C)	
MECHANICAL SPECIFICATIONS		
Weight (Approx)(KG)	92kg	96kg
Dimension (W/D/H)(mm)	485*690*186mm	
Installation Mode	Wall Hanging	
IP Grade	IP65	
Safety(Pack)	IEC62619, UL1973,CE-EMC,UN38.3,MSDS	
Safety(Cell)	UN38.3,MSDS,IEC62619,CE,UL1973,UL2054	
Protection	BMS,Breaker	
ENVIRONMENTAL SPECIFICATIONS		
Operating Temperature(°C)	Charge:-10°C~50°C;Discharge:-20°C~50°C	
Altitude (m)	≤2000	
Humidity	≤95%(Non-condensing)	



## 5-10Kwh Rack-Mounted Battery PK-512100R/PK-512200R

RACK SERIES IS THE IDEAL SOLUTION FOR RESIDENTIAL & INDUSTRIAL STORAGE SYSTEMS, 51.2V WITH CAPACITY 100-200AH AVAILABLE, PARALLEL CONNECTION&REMOTE UPDATE & EASY MONITORING



LFP technology plus smart BMS protection



Compact size and inset terminals safe protection design



Over 7000 cycles @90% DoD

**15**  
Years

15 Years service life  
95% discharge efficiency



Metal case with custom color support

### Multi-Purpose Battery Solution



Upgraded BMS And More Compact Internal Layout.



With UL Certificate.



15 Years Of Service Life With A 10-Year Warranty.



Up To 25 Units In Parallel & Supports Stacking Into Cabinets


## Technical Specifications(BAT)

Model	PK-48100R/PK-512100R	PK-48200R/PK-512200R
Cell model/Configuration	3.2V 100Ah/15S1P 3.2V 100Ah/16S1P	3.2V 200Ah/15S2P 3.2V 200Ah/16S2P
Voltage	48V/51.2V	
Capacity	100AH	200AH
Rated Energy	4.8/5.12KWH	9.6/10.24WH
Usable Energy	4.6KWH	9.45KWH
Max.Charge/Discharge Current	100-200A	
Voltage Range	43-53V/48-56.5V	
Scalability	Up to 25 parallel	
Communication	RS232-PC,TYPE-C(PC).RS485-Inverter,Canbus-Inverter	
Cycle Life	≥7000cycles@25°C,90% DOD,60%EOL	
Design Life	15Years	
<b>MECHANICAL SPECIFICATIONS</b>		
Weight	48kg	92kg
Dimension	L480*W482*H133mm L460*W482*H178mm	L680*W482*H178mm
Installation Mode	Stack	
IP Grade	IP21	
<b>MECHANICAL SPECIFICATIONS</b>		
Safety (Pack)	UN38.3,MSDS,IEC62619 CE-EMC,UL1973	CE-EMC,UN38.3,MSDS
Safety (Cell)	UN38.3,MSDS,IEC62619 CE,UL1973,UL2054	UN38.3.MSDS
Protection	BMS. Breaker	
<b>ENVIRONMENTAL SPECIFICATIONS</b>		
Operating Temperature(°C)	Charge: -10°C~50°C; Discharge: -20°C~50°C	
Altitude (m)	≤2000	
Humidity	≤95%	


# PK LFP Series Lithium Phosphate Battery Pack Lead Acid Replacement Battery

PK LFP SERIES LIFEPO4 BATTERIES PROVIDE EFFICIENT ENERGY OUTPUT CELLS AND ACCEPT CONTINUOUS HIGH-RATE CHARGING CURRENT. SUPPORTS OVERVOLTAGE, OVERCURRENT, OVERDISCHARGE, AND OVERTEMPERATURE PROTECTION.






LFP technology plus smart BMS protection




Compact size and inset terminals safe protection design



Over 7000 cycles @90% DoD

**10 Years**

10 Years service life  
95% discharge efficiency

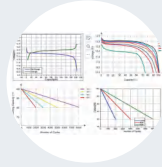


ABS Case with custom color support (upgradable to waterproof case)

## Multi-Purpose Battery Solution



Load Bearing Capacity Of 50Kg



10 Years Of Service Life With A 5-Year Warranty



ABS Case-IP65 Waterproof And Dust Proof Grade, And Can Be Customized To Upgrade The Metal Shell



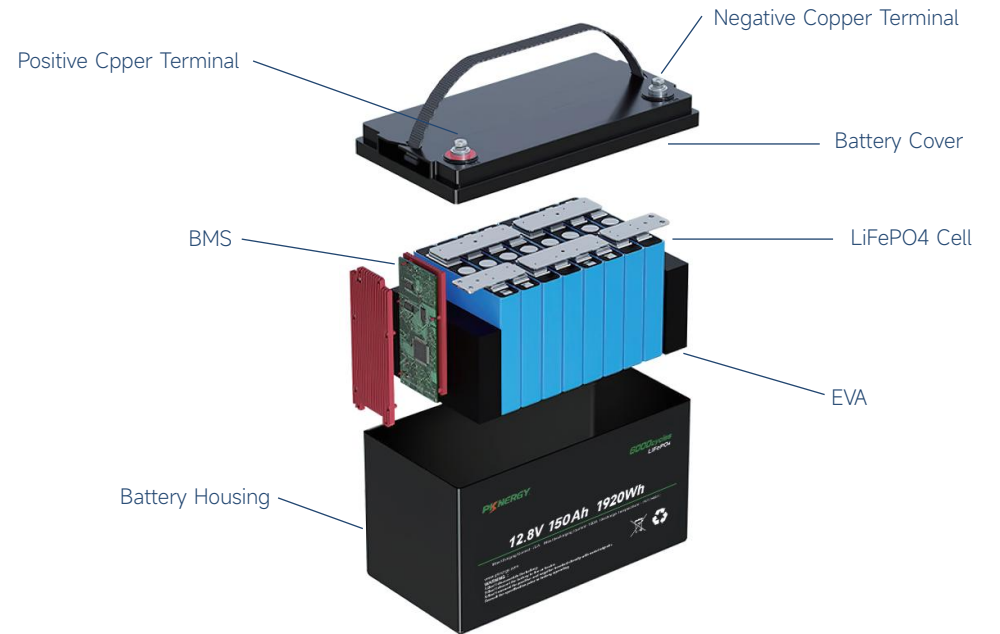
Adhere To The Use Of Brand New Cells, Support 3 Times Refund During The Warranty Period



Internal Integrated BMS With Autonomous Monitoring Of Battery Safety

BATTERY TYPE		LIFEPO4 BATTERY					
Model		PK-1250-LFP	PK-12100-LFP	PK-12150-LFP	PK-12200-LFP	PK-24100-LFP	PK-24200-LFP
Normal voltage(V)		12.8	12.8	12.8	12.8	25.6	25.6
Nominal capacity(Ah)		50	100	150	200	100	200
Charging current	strand	0.2C	0.2C	0.2C	0.2C	0.2C	0.2C
	Max	0.5C	0.5C	0.5C	0.5C	0.5C	0.5C
Discharging current	strand	0.5C	0.5C	0.5C	0.5C	0.5C	0.5C
	Max	1C	1C	1C	1C	1C	1C
Dimension(mm)		197*165*170	330*172*215	330*172*215	522*240*218	483*170*240	522*240*218

1. TEST CONDITIONS: CELL VOLTAGE 2.5 ~ 3.65V, 0.5C CHARGE & DISCHARGE AT +25 ±2 °C FOR BATTERY SYSTEM AT BEGINNING LIFE.  
2. NOMINAL DIS- / CHARGE CURRENT AND POWER DERATING WILL OCCUR RELATED TO TEMPERATURE AND SOC





# PK-HES-6KW

Hybrid On & Off Grid Energy Storage Solar Inverter  
6kW



**IP65 Rated**  
Engineered to last with maximum flexibility. Suitable for outdoor installation

**On-Grid and Off-Grid**  
REVO HES series is suitable for on-grid and off-grid applications.

**Easy access**  
Accessible through a LCD touch screen and through the web.

**Remote Monitoring**  
Control and monitor your smart system on the move via our monitoring App and website

**BMS**  
BMS Communication or lithium battery

**Safe**  
Physical and electrical dual isolation, with Leakage Current Monitoring, Anti-island protection, Insulation detection and so on

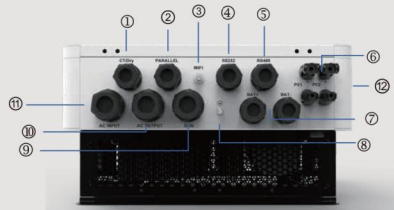
**5 Years Warranty**  
Supplied with a full manufacturers warranty

**Flexible Rate Tariff**  
Charge from the grid at off-peak time when energy is cheaper, and discharge at peak time when energy is more expensive.

## ENERGY STORAGE INVERTER IP65

Technical Specification	PK-HES-6KW
<b>PV INPUT</b>	
Max. power(kW)	7
Max. DC voltage(V)	550
MPPT voltage range(V)	90~450
Max. input current(A)	30
MPPT number/Max. input strings number	1/2
<b>AC OUTPUT(GRID-TIED)</b>	
Grid voltage(range(V))	230/90-280(For Personal Computers);170~280(For Home Appliances)
Frequency (Hz)	50 /60
PF	0.8lagging-0.8leading
THDi	<3%
AC output topology	L+N+PE
<b>BATTERY</b>	
Battery voltage range(V)	42~63
Max. charging voltage(V)	63
Max. charge/discharge current(A)	100/120
Battery type	Lithium /Lead-acid
<b>UPS OUTPUT</b>	
Rated power (kw)	6
Rated output voltage(V)	220/230/240
Rated output current(A)	25/27/27.2
Rated frequency (Hz)	50/60
Transfer Time(ms)	<10
THDu	<2%
Overload capacity	5s≥110%load;10s≥101%~110%load
<b>PROTECTION &amp; FEATURE</b>	
Anti-island protection	Yes
Insulation monitoring	Yes
Residual current monitoring	Yes
Arc fault protection	Yes(Optional)
Parallel function	Yes,6 units
Other protection	AC overcurrent, AC overvoltage, Over temperature protection
<b>GENERAL PARAMETER</b>	
Efficiency(Peak)	94%
Degree of protection	IP 65
Operation temperature	-25°C~60°C,>45°C derating
Cooling	smart cooling
Relative humidity	0~95%(non-condensing)
Altitude	(>2,000m Derating)
Dimensions W x D x H (mm)	345*197*661
Net Weight(KG)	22.5
Isolation anformer	No
Self-consumption(W)	<5
<b>DISPLAY AND COMMUNICATION</b>	
Display	Touch screen
Interface	Standard:RS232,CAN&RS485, Optional: Bluetooth, WIFI,CT
Safety standard	EN/IEC 62109-1,EN/IEC 62109-2

### Product characteristics

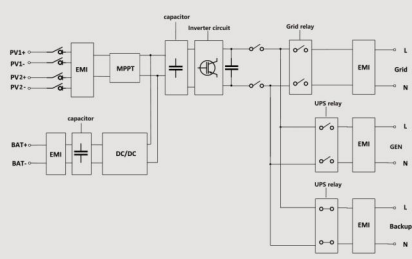


- ① CT/Dry
- ③ AC OUTPUT
- ② PARALLEL
- ④ AC INPUT
- ③ WIFI
- ⑤ SWITCH
- ④ RS232
- ⑥ PV PORT
- ⑤ RS485
- ⑦ BATTERY
- ⑧ GROUNDING
- ⑨ GEN

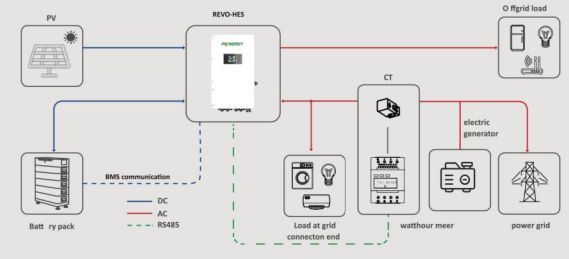


LCD touch screen

### Circuit block diagram



### Product application diagram





# Pknergy HMT

## Hybrid On & Off Grid Energy Storage Inverter

series **11kw**



**On-Grid and Off-Grid**  
REVO HMT series is suitable for on-grid and off-grid applications.



**Remote Monitoring**  
Control and monitor your smart system on the move via our monitoring App and website



**BMS**  
BMS Communication for lithium battery



**Easy access**  
Accessible through a LCD touch screen and through the web. Two outputs for smart load management



**Safe**  
Built-in anti-dust kit for harsh environment AC overcurrent, AC overvoltage, over temperature protection

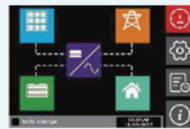


**Flexible Rate Tariff**  
Charge from the grid at off-peak time when energy is cheaper and discharge at peak time when energy is more expensive.

### Product characteristics

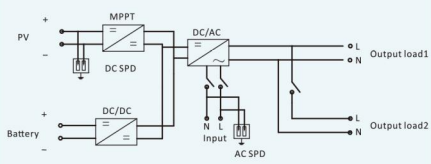


A:AC OUTPUT  
B:AC INPUT  
C:COM  
D:PVINPUT  
E:ON/OFF  
F:DC INPUT  
G:PARALLEL CONNECTION

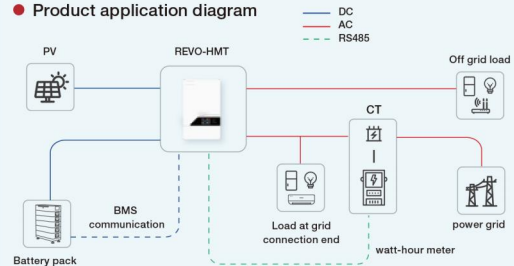


LCD touch screen

### Circuit block diagram

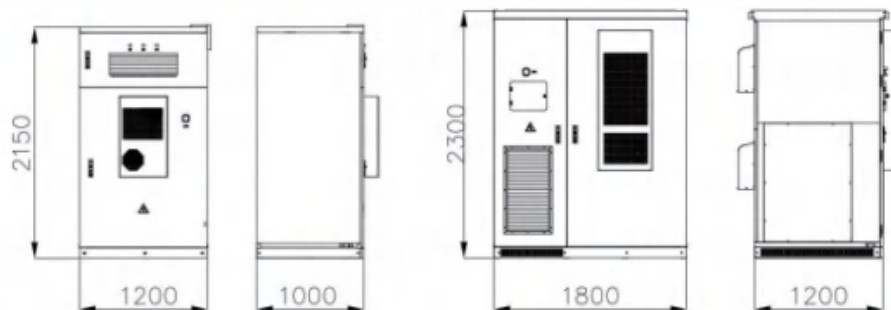


### Product application diagram



Technical Specification	PKHMT-11KW
Rated Power	11000VA/11000W
<b>AC INPUT</b>	
AC Voltage	230VAC
Voltage Range	170~280VAC (For Personal Computers) ; 90~280 VAC (For Home Appliances)
Frequency Range	50/60Hz (Auto sensing)
<b>AC OUTPUT</b>	
Surge Power	22000VA
Voltage Regulation (Battery Mode)	230VAC ± 5%
Rated frequency	50/60Hz
Efficiency (Peak)	93%
Transfer Time	10ms (For Personal Computers) ; 20ms (For Home Appliances)
<b>BATTERY</b>	
Battery Voltage	48VDC
Floating Charge Voltage	54VDC
Overcharge Protection	63VDC
Battery type	Lithium/Lead-acid
<b>SOLAR CHARGER &amp; AC CHARGER</b>	
Maximum PV Array Open Circuit Voltage	500VDC
Maximum PV Array Power	11000W
MPPT voltage range(V)	90~450VDC
Maximum input current	27A
MPPT tracker/strings	2
Maximum solar charge current	150A
Maximum AC charge current	150A
Maximum charge current	150A
<b>PROTECTION &amp; FEATURE</b>	
AC overcurrent	Yes
AC overvoltage	Yes
Over temperature protection	Yes
Smart load management	Yes
On Grid	Yes
Parallel function	Yes,6 units
<b>GENERAL PARAMETERS</b>	
Operation temperature	-10°C ~ 50°C
Relative humidity	5% ~ 95% (Non-condensing)
Altitude	(>2000m Derating)
Dimensions D x W x H(mm)	1474*43*553.6
Net Weight(KG)	18.4
<b>DISPLAY AND COMMUNICATION</b>	
Display	Touch screen
Interface	Standard:RS232,CAN&RS485; Optional: WiFi,Bluetooth,CT
Safety standard	EN/IEC 62109-1,EN/IEC 62109-2

# BESS



## High energy storage battery series

- Highly integrated: Productized system. Integrating energy storage battery.
- PCs and power distribution, temperature control fire extinguishing, water immersion door magnetic and monitoring communication to fully control the operating status and risks of the system.
- Flexible parallel functions: with patent technology of VSG features and functions. Can realize the functions of multiple equipment remotely parallel and on/off grid switching without communication lines.
- Excellent protection: Patent outdoor cabinet protection design, optimizing heat dissipation and air ventilation, prevent dust and rain. Front back and two sides with door for maintenance, easy to make multiple sets of systems side by side deployment on site, saving the floor space.
- Various functions: Standardized structure design, menu function configuration, solar charging module [DC-DC], and on/off grid switching module, isolation transformer and other components can be selected flexibly and efficiently under micro-grid and other applications.
- Space saving: Door mounted integrated air conditioning. Does not occupy cabinet space, improving the available space of outdoor cabinet, keep top structure integrity, results in better waterproof effects.
- Intelligent management: Local monitoring screen can realize various functions such as system operation monitoring, energy management formulation and remote software upgrade of equipment.

Model	PK-BESS-100 (ON)	PK-BESS-215 (ON)	PK-BESS-83 (ON/OFF)	PK-BESS-215 (ON/OFF)
Max.PV input power	/	/	50kW	100kW
Max.PV input voltage	/	/	620V	680V
STS	/	/	STS optional	STS optional
Transformer	/	/	Transformer inside	Transformer inside
Battery (DC)				
Rated battery capacity	100kW	215kW	83kW	215kW
Rated system voltage	844.8V	768V	691.2V	768V
Battery type	Lithium iron phosphate battery(LFP)			
Battery Cell capacity	120Ah	280Ah	120Ah	280Ah
Series of battery	1P*24S*11S	1P*20S*12S	1P*24S*9S	1P*20S*12S
AC				
Rated AC power	50KW	100KW	50KW	100KW
Rated AC current	72A	144A	72A	144A
Rated AC voltage	400V, 3P+N+PE, 50/60Hz			
THDi	<3%(rated power)			
PF	1 leading to+1 lagging			
General Parameters				
Protection level	IP55			
Isolation mode	Non-Isolation (Adding isolation transformer is optional)			
Operating temperature	-25~60°C (Derating above 45°C)			
Altitude (m)	3000m (>3000m derating)			
Communication interface	RS485/CAN 2.0/Ethernet/dry contact			
Dimension(W*D*H)	1200*1000*2150mm	1800*1200*2300mm	1400*1000*2300mm	1800-1200-2300mm
Weight(with battery)	1200kg	2400kg	1750kg	3000kg









**120KW Hy-Grid Solar System In Thailand**



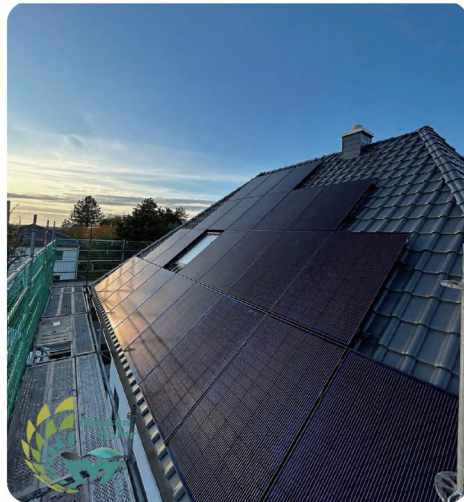
**BESS Container**



**20KW Hy-Grid Solar System In Indonesia**



**Base station UPS power projects**



**70KW Residential Use in Singapore**



**20KW Residential Use in USA**

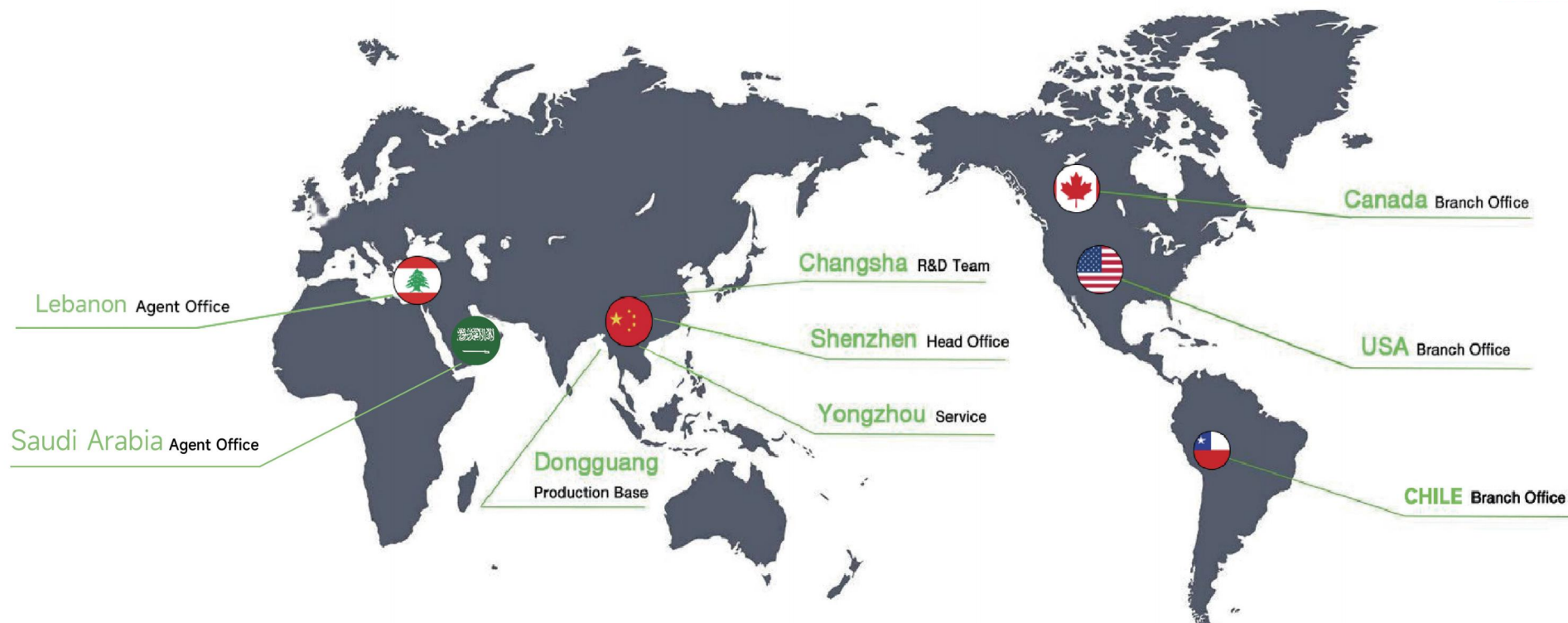


**14MW Hy-Grid Solar System**



**100KW On-grid Solar System in Hungary**





**Head Office**

SHENZHEN PKENERGY ENERGY CO., LTD

**Address**

7th Floor , block B, Yicheng Huanzhi center, Renmin Road,Longhua District, Shenzhen,China

**Tel**

86-755-86670672

www.pknergy.com

www.pknergypower.com

**USA Branch Office**

FUSPOWER INC(USA)

**Address**

4650 Arrow Hwy Ste E6/7, Montclair, Ca,91763

**Tel**

+1-909-971-3484

**Fax**

+1-909-971-3483

**Canada Branch Office**

DURNERGY Inc.

**Address**

Unit #11, 270 Esna Park Dr., Markham, ON L3R 1H3, Canada

**Tel**

+1-(905) 604-7556

**Fax**

+1-(905) 604-7559

**Lebanon Agent Office**

**Address**

607 warehouse street, Antelias Mizher, elMetin, Lebanon

**Tel**

+(961)0370087172

**Fax**

+(961)0370087172

**Chile Branch Office**

**Address**

Av. Kennedy N° 6800 Of 610A Vitacura,Santiago,Chile

**Tel**

+56 965073589

**Fax**

+56 965073589

**Saudi Arabia Agent Office**

FANUUN BCG

**Address:** Al Rimal, Riyadh, Kingdom of Saudi Arabia

**Tel**

+966 54 1415697

**FAX**

+966 54 1415697

